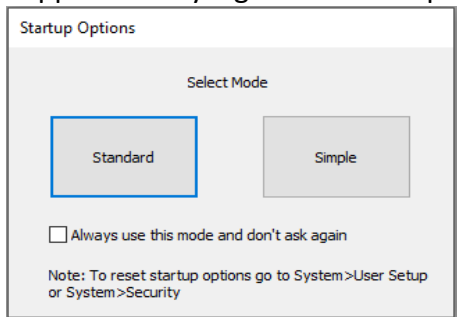
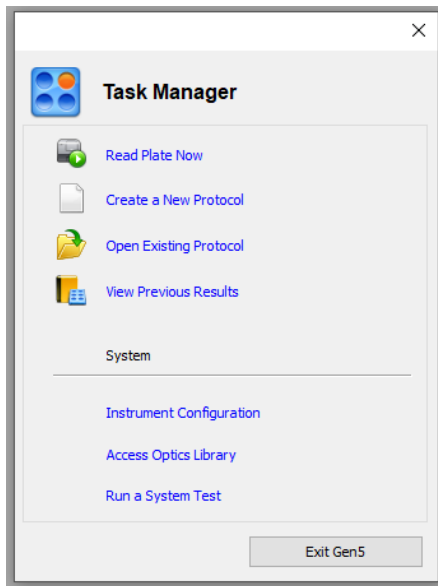


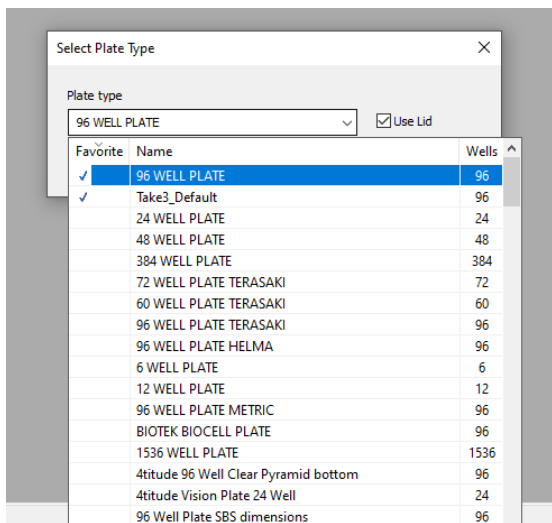
Supplementary Figure 1a. Startup Options window.



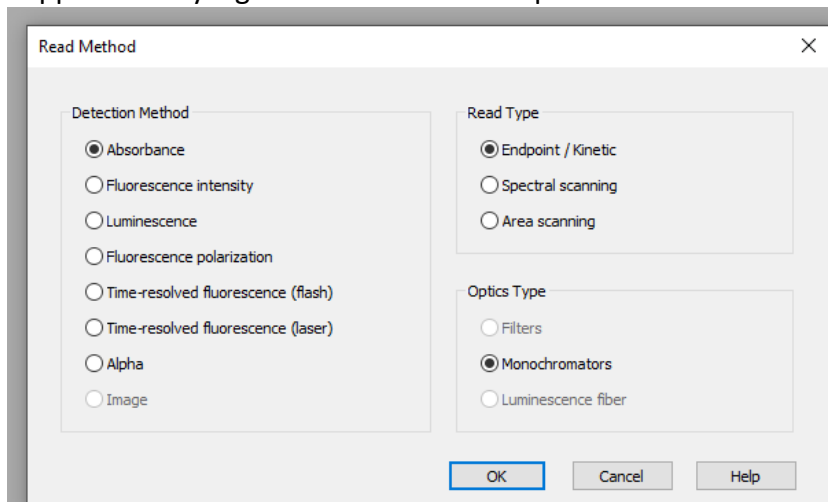
Supplementary Figure 1b. Task Manager window for creating a protocol.



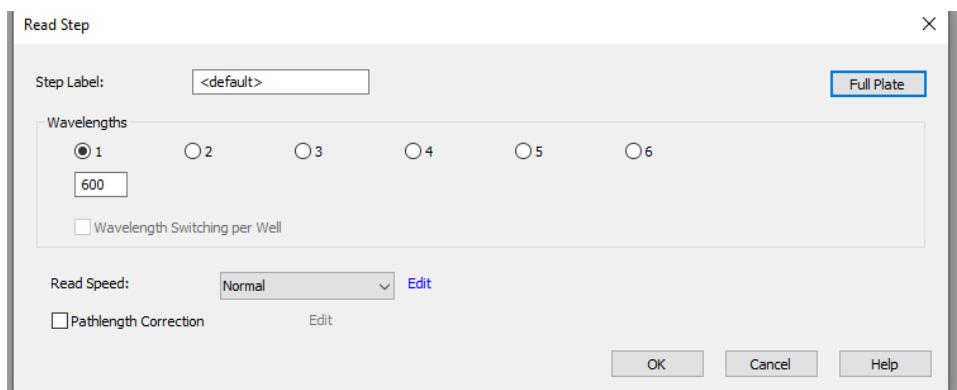
Supplementary Figure 2. Select plate type using a drop-down list.



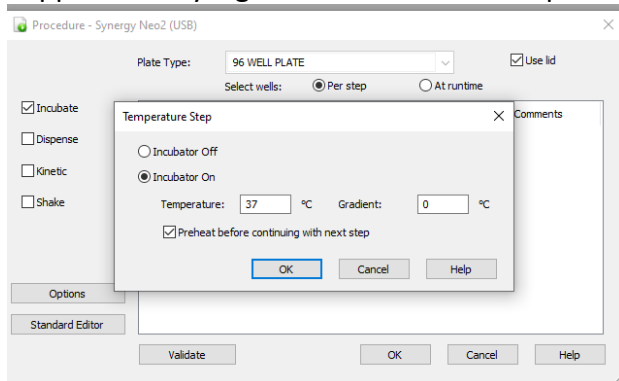
Supplementary Figure 3. Read Method options window.



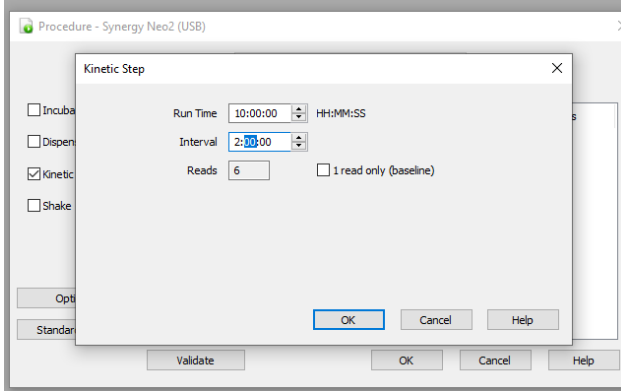
Supplementary Figure 4. Read Step selection window.



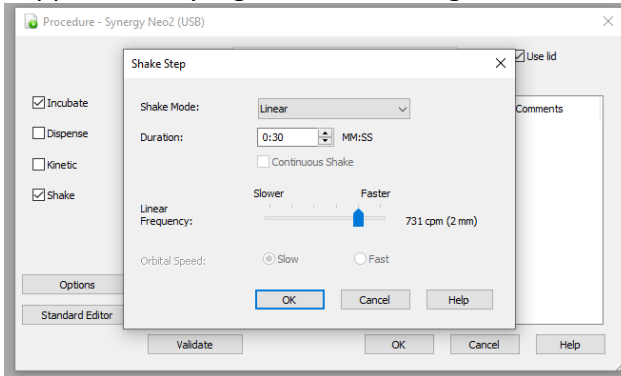
Supplementary Figure 5a. Procedure setup window.



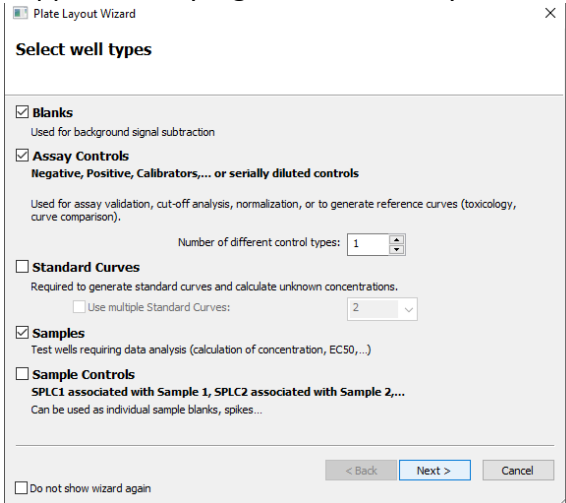
Supplementary Figure 5b. Kinetic mode setup window.



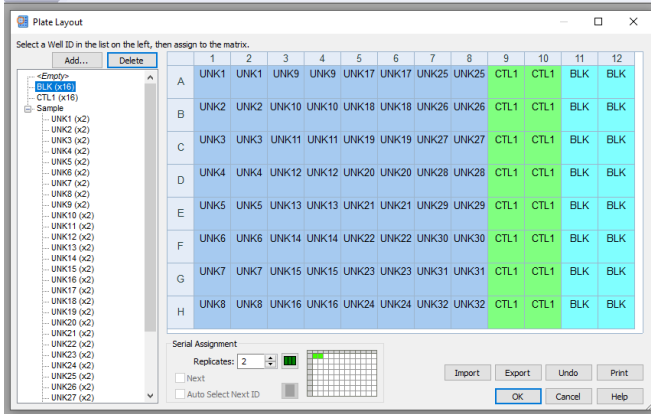
Supplementary Figure 6a. Selecting Shake Mode in the Shake Step window.



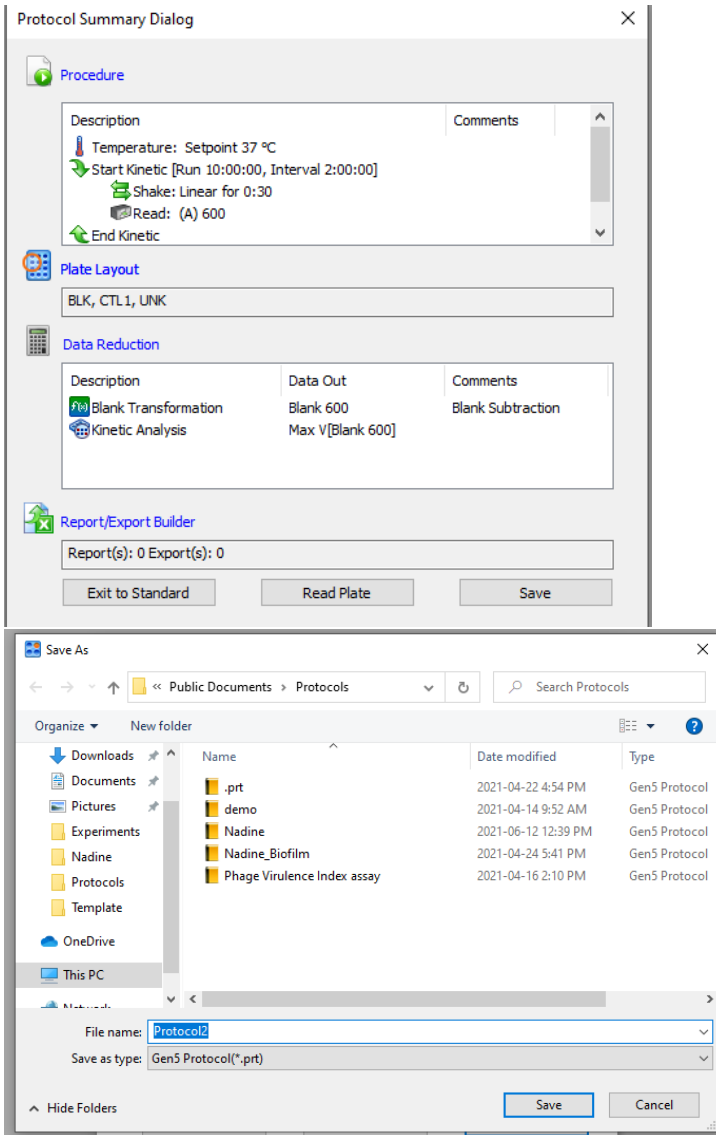
Supplementary Figure 7a. Plate Layout Wizard window.



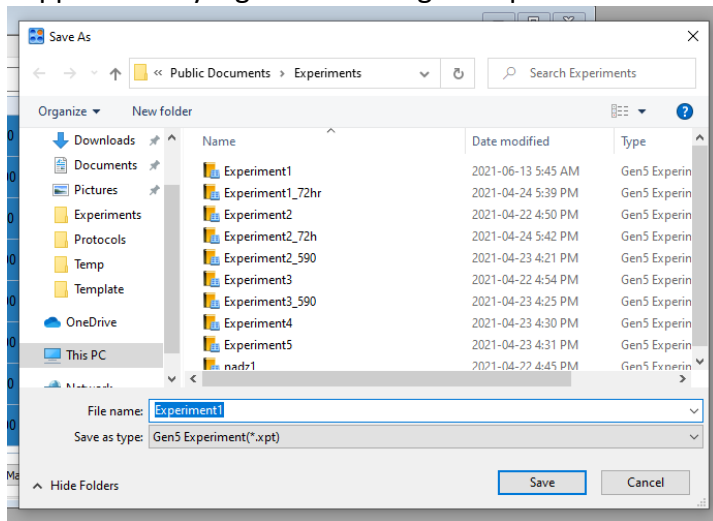
Supplementary Figure 8. Plate Layout window.



Supplementary Figure 9. Protocol Summary Dialog box.



Supplementary Figure 10. Saving an experiment as a .xpt file.



Supplementary Figure 11. Exporting experimental results to Excel.

